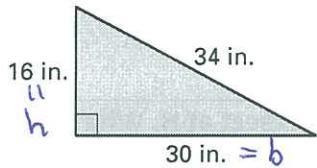


Name: _____ TP: _____

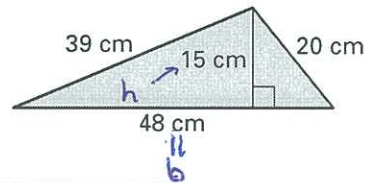
Failure to show work on all problems or use complete sentences will result in a LaSalle. Round to hundredths!

1) Find the area and perimeter of the triangle below:

$$A = \frac{1}{2} b \cdot h$$

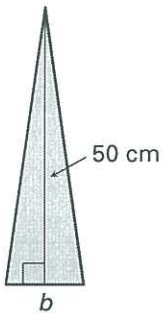


2) Find the area and perimeter of the triangle below:



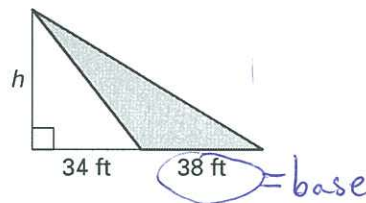
3)

$$\text{Area} = 345 \text{ cm}^2$$

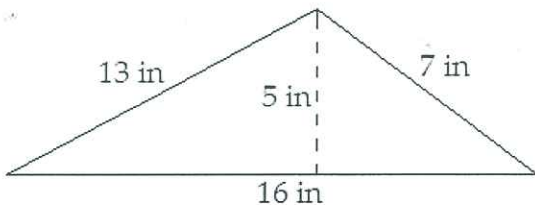
Find the base b .

4)

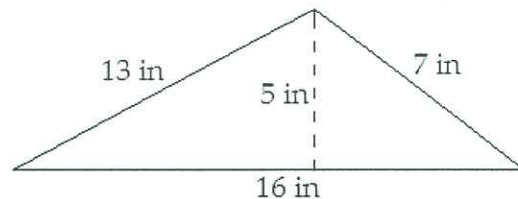
$$\text{Area} = 826.5 \text{ ft}^2$$

Find the height h .

5) Find the area of the shape below.

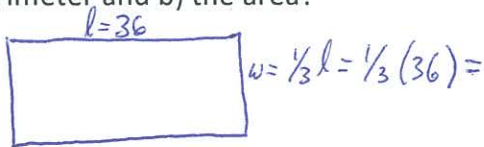
A. 36 in^2 B. 56 in^2 C. 40 in^2 D. 80 in^2

6) Find the perimeter of the shape below.



A. 41 in B. 36 in C. 40 in D. 35 in

7) The width of a rectangle is a third of its length. If the length of the rectangle is 36 inches, what is a) the perimeter and b) the area?



8) Michelle is painting her bedroom walls neon pink. How many square feet will she paint if her bedroom is 20 feet by 12 feet?

9) What is the equation of the line that passes through (5,6) and is parallel to $y=5x-3$?

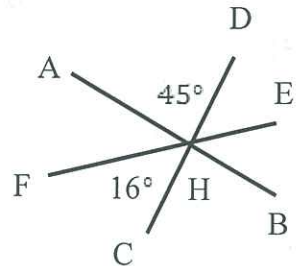
new line $\Rightarrow y=5x+b$ (Hint: now plug in points it passes through)

10) What is the equation of the line that passes through (3,4) and is perpendicular to $y=3x-8$?

11) What values satisfy the absolute value?
 $|x-4|=6$

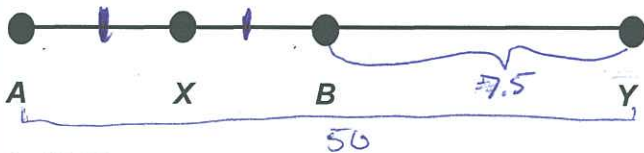
$$\begin{array}{|l} x-4=6 \\ x-4=-6 \end{array}$$

12) Segments AB, CD, and EF intersect at H. What is the measure of angle EHB?



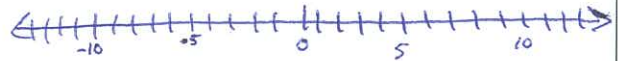
- A. 45°
- B. 29°
- C. 119°
- D. 61°
- E. 164°

13) If $AY = 50$, $BY = 7.5$, and X is the midpoint of AB, how long is AX?



- A. 22.25
- B. 21.25
- C. 20
- D. 42.5
- E. 26

14) If your start position is at 0 on the number line and you move 10 places left then 4 places right and then 6 places left, what is your final position?



- A. 2
- B. 10
- C. -10
- D. -11
- E. -12

15) The width of a rectangle is 2 times the length. If the perimeter is 60 inches, a) find the length and the width of the rectangle and b) find the area of the rectangle.

G R A S P